

Laser Ultrasonic Visualizing Inspector

LUVI-CP2



Easy to use & Portable

Compact
LUVI
Debut

- Affordable Price & High Performance
- Compact & The lightest in LUVI models
- Ideal for desktop use

LUVI-CP2



Specifications

Model :	LUVI-CP2
Visualization area :	View angle $\approx 50^\circ$
Number of channels :	2CH (option 8CH)
Distance to objects :	0.1 - 3m(3.9 -118inches)
Laser scanning speed :	Max. 5kHz
Laser power :	Max. 650 μ J
Laser minimal pulse width :	7ns
Laser wave length :	1064nm (YAG)



Main Applications

Materials : Metal / Ceramics / Plastics / Composites
Defects : Crack / Corrosion / Voids / Delamination, etc
Inspection for complex and curved-shape object



Configuration

Laser Unit

Weight : 7.9kg (17.42lb)

Size : W214(8.43") \times D238(9.37") \times H161(6.34") mm (inches)

Scan Unit

Weight : 3.5kg(7.72lb)

Size : W351(13.82") \times D98(3.86") \times H85(3.35") mm(inches)

Power Unit

Weight : 3.5kg(7.72lb)

Size : W180(7.09") \times D240(9.45") \times H100(3.94") mm(inches)

Power consumption : AC100V/250W

Software

Measurement parameter setting : Semi-automatic settings of laser scanning area and ultrasonic reception conditions

Moving image : Propagation image of ultrasonic waves

Other images : Maximum amplitude (2D、3D) , B-scope (velocity graph) , A-scope, Test sample picture (with laser scanning area guide light)

Guide light function : Indicating the defect point and laser scanning area with guide light

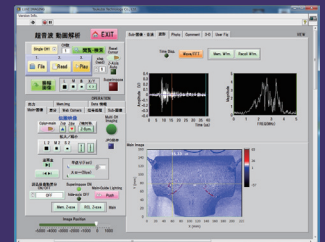
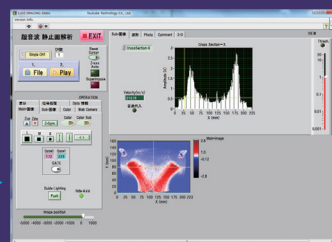
Data output : Excel report (Image and wave data)

Option

Laser probe for noncontact reception

Compact USB pulser-receiver

LUVI operation display ▶



Tsukuba Technology Co., Ltd.

Head Office : Sengen 1-14-11, Tsukuba city, Ibaraki, 305-0047, Japan

Tel : +81-29-852-7777

Fax : +81-29-886-5528

E-mail : info@tsukubatech.co.jp URL : <http://www.tsukubatech.co.jp>